

# FLAT

Design by Ichiro Iwasaki.

# VIBIA

## Reference

**5935.**

## Application

Hanging lamps

## Installation type

Surface

## Description

Flat lamps are a creation from the designer Ichiro Iwasaki. The discs of light descend from the ceiling to form a hanging lamp, where the planes of reflected light blend in with the architecture. All the models in the Flat collection incorporate LED lighting and are available in a range of neutral colour tones.

## Diffuser

Polycarbonate diffuser

## Materials

Ceiling rose: Steel  
Reflector: Aluminum  
Body: Steel  
Head: Aluminium

## Finish



**5935-13** Grey L1 (NCS S 1000-N)

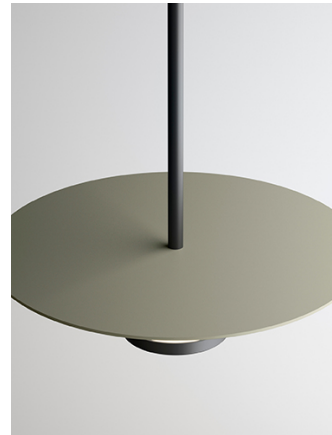
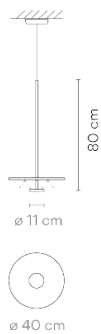


**5935-37** Terra Red (NCS S 4040-Y70R)



**5935-47** Green L1 (NCS S 4005-G80Y)

## Sketch



**Light source:** 2700K CRI >90 1740 lm 128 lm/W

**Driver included:** CC - Constant Current 700 mA 110-240V 50/60Hz

**Electronic dimming** DALI 1-10V Push

## Physical characteristics

0 Box / 0.00 x 0.00 x 0.00 m. / Vol. 0.0000 m<sup>3</sup> /  
Gross weight 0.0 kg. / Net weight 0.0 kg.

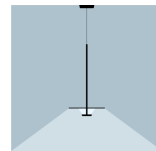
## Installation and assembly

Please, see the installation manual

## Light distribution

### Indirect lighting

Lamp that emits an upward or backward beam that is reflected by the ceiling or wall.



## Photometric data

## Certificates



## Electrical characteristics

1 x LED PLATE 13,5W 700mA

Total 13.5 W

